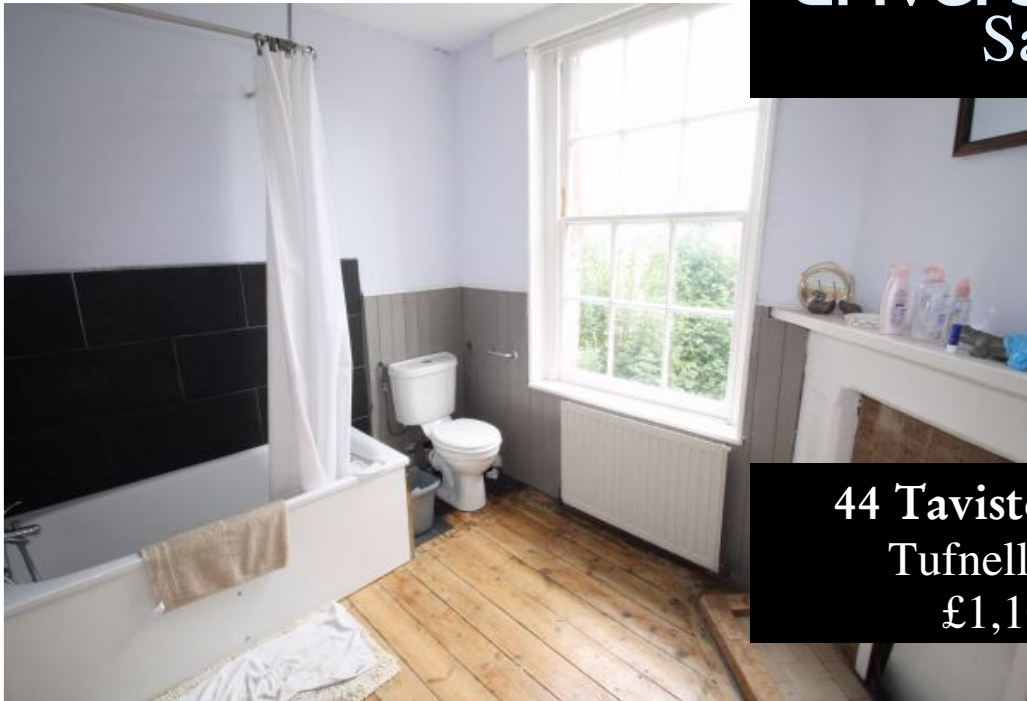




drivers&norris
Sales

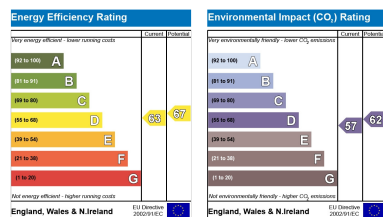
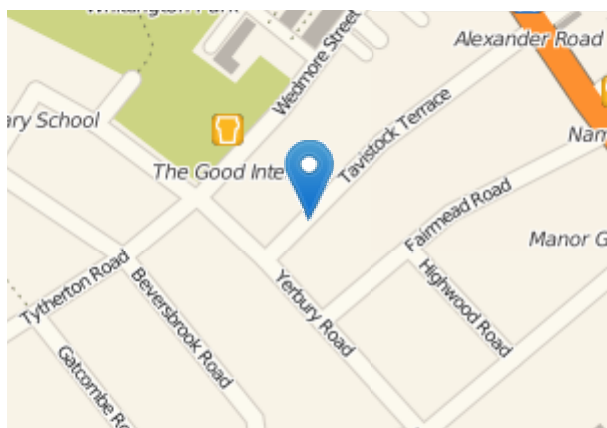
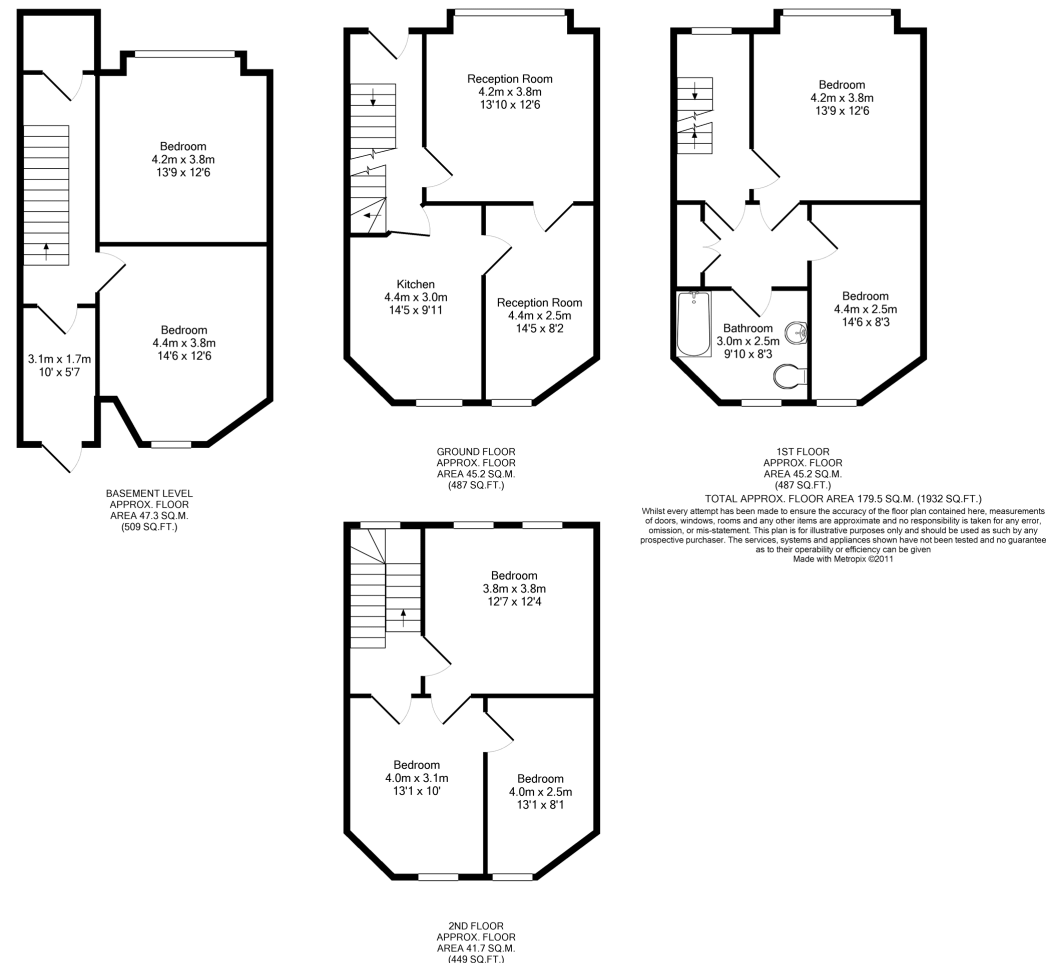


44 Tavistock Terrace
Tufnell Park N19
£1,100,000

A rare chance to acquire a four storey 4/5 bedroom mid terraced Victorian house situated in one of Tufnell Park's most sought after roads and within close proximity to Yerbury Primary School.

The property is arranged over four levels and offers excellent family accommodation, but requires updating and modernisation. The house would make an ideal family home and is highly recommended for early viewing.

- Chain free
- Close to Yerbury School
- 4/5 Bedrooms
- 3 Reception rooms
- Family bathroom
- Kitchen
- Utility area
- Some period features
- The house requires works of modernisation and updating.



TO THE BEST OF DRIVERS & NORRIS KNOWLEDGE THESE DETAILS HAVE BEEN PREPARED IN COMPLIANCE WITH THE PROPERTY MISDESCRIPTIONS ACT, SUBJECT PARTICULARLY TO THE FOLLOWING:-
ALL SIZES ARE APPROXIMATE AND MEASURED TO THE NEAREST 3 INCHES AS STANDARD. METRIC EQUIVALENTS ARE ROUNDED TO THE NEAREST 0.05M ON THE ABOVE BASIS.
MEASUREMENTS ARE GIVEN FOR GUIDANCE ONLY. ROOM SIZES CAN BE IRREGULAR AND VARY DUE TO DESIGN AND DISTORTION - PARTICULARLY IN OLDER PROPERTIES.
ACCOMMODATION IS DESCRIBED AS CURRENTLY USED. NO WARRANTY IS GIVEN THAT ANY NECESSARY CONSENTS, PLANNING OR OTHERWISE, HAVE BEEN OBTAINED.
THE AGENTS HAVE NOT TESTED ANY APPARATUS, EQUIPMENT, FIXTURE FITTINGS OR SERVICES, AND CANNOT VERIFY THEY ARE IN WORKING ORDER, OR FIT FOR THEIR PURPOSE. NEITHER HAVE THE AGENTS CHECKED THE LEGAL DOCUMENTS TO VERIFY THE FREEHOLD/LEASEHOLD TITLE. THE BUYER IS ADVISED TO OBTAIN VERIFICATION FROM THEIR SOLICITORS OR SURVEYOR.
THE SELLER DOES NOT INCLUDE IN THE SALE ANY FITTED CARPETS, CURTAINS OR BLINDS. NOR ARE ANY GAS OR ELECTRICAL APPLIANCES INCLUDED, HOWEVER CONNECTED, OR ANY OTHER FIXTURES UNLESS EXPRESSLY MENTIONED IN THESE PARTICULARS AS FORMING PART OF THE SALE.