



DRIVERS & NORRIS

PROPERTY & SO MUCH MORE

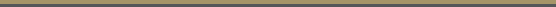
3 Bedroom House

£1,300,000

Tavistock Terrace, London, N19 4BZ

Key Features:

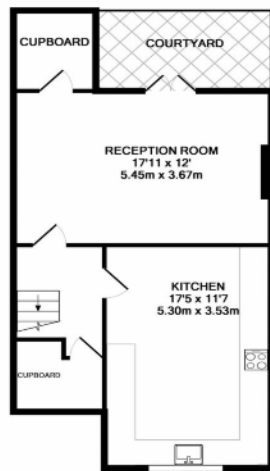
- Three Bedroom Georgian House
- Spacious Reception Room
- Eat-In-Kitchen
- Period Features
- Decorative Fireplace
- Fully Tiled Bathroom
- Mature Rear Garden
- Close To Underground Station



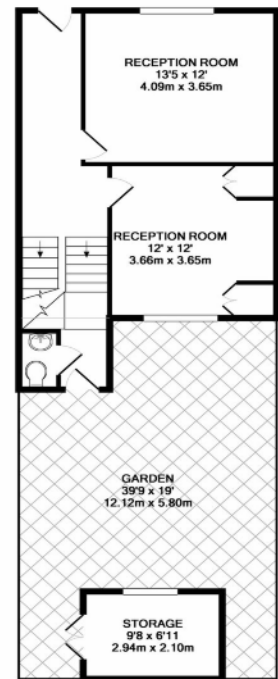
Information

Tenure: Freehold

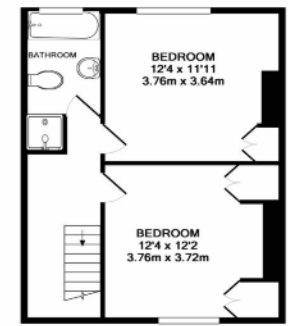
Council Tax: Band - TBC



LOWER GROUND FLOOR



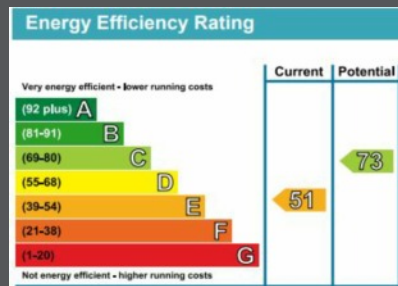
GROUND FLOOR



1ST FLOOR

TRAVISTOCK TERRACE N19
TOTAL APPROX. FLOOR AREA 1416 SQ.FT. (131.5 SQ.M.)

Plans are for identification and guidance purposes only, not to scale. Compliant with RICS code of measuring practice Floor plan supplied by Chris Chapman Limited. Made with MyPlanSpace 2024.





DRIVERS & NORRIS
PROPERTY & SO MUCH MORE

Making a row of row of pictures terraced houses on arguably one of the areas most desirable roads situated between Tuffnell Park, Archway and Holloway; is this charming Three Bedroom Georgian House. This fabulous house has been sympathetically restored to ensure the original character features are retained and blended with modern living to present the ideal family home.

Spanning three floors this stunning example of Georgian Architecture has been maintained to a high standard and affords the owners well-proportioned rooms, coving, feature fireplace, a wealth of natural light, high ceilings plus further potential to extend up and out (STPP).

Accessed via a beautiful entrance hall the ground floor reception offers a fabulous entertaining area leading through to the dining room/third bedroom through oversized wooden doors, there is also the benefit of a secondary W.C. Accessing the lower ground floor the main reception room gives direct access to the front courtyard through double French doors, the fitted kitchen to the rear of the house comes complete with integrated appliances and more than enough space for dinning. The first floor comprises of two well proportioned double bedrooms with built in wardrobes and fully tiled bathroom with full bath and addition on walk in shower cubical. This elegant home also benefits from a mature garden with lawn laid to flower beds, patio area and sizable storage room to the rear.

Tavistock Terrace is located moments from Yerbury Primary School, William Ellis, Parliament Hill and Ackland Burghley making it very popular with families who want to be within the catchment areas. There are diverse local shopping facilities including Waitrose, independent retailers on Fortess Road, Farmers Market at the Tuffnell Park Tavern and fresh food market just off Holloway





DRIVERS & NORRIS

PROPERTY & SO MUCH MORE

Est 1852

0207 607 5001

drivers.co.uk



TO THE BEST OF DRIVERS & NORRIS KNOWLEDGE THESE DETAILS HAVE BEEN PREPARED IN COMPLIANCE WITH THE CONSUMER PROTECTION FROM UNFAIR TRADING REGULATIONS (CPR) 2008 & THE BUSINESS PROTECTION FROM MISLEADING MARKETS REGULATIONS (BPR), SUBJECT PARTICULARLY TO THE FOLLOWING: ALL SIZES ARE APPROXIMATE AND MEASURED TO THE NEAREST 3 INCHES AS STANDARD. METRIC EQUIVALENTS ARE ROUNDED TO THE NEAREST 0.05M ON THE ABOVE BASIS. MEASUREMENTS ARE GIVEN FOR GUIDANCE ONLY. ROOM SIZES CAN BE IRREGULAR AND VARY DUE TO DESIGN AND DISTORTION, PARTICULARLY IN OLDER PROPERTIES. ACCOMMODATION IS DESCRIBED AS CURRENTLY USED. NO WARRANTY IS GIVEN THAT ANY NECESSARY CONSENTS, PLANNING OR OTHERWISE, HAVE BEEN OBTAINED. THE AGENTS HAVE NOT TESTED ANY APPARATUS, EQUIPMENT, FIXTURE FITTINGS OR SERVICES AND CANNOT VERIFY THEY ARE IN WORKING ORDER OR FIT FOR THEIR PURPOSE. NEITHER HAVE THE AGENTS CHECKED THE LEGAL DOCUMENTS TO VERIFY THE FREEHOLD/LEASEHOLD TITLE. THE BUYER IS ADVISED TO OBTAIN VERIFICATION FROM THEIR SOLICITORS OR SURVEYOR. THE SELLER DOES NOT INCLUDE IN THE SALE ANY FITTED CARPETS, CURTAINS OR BLINDS. NOR ARE ANY GAS OR ELECTRICAL APPLIANCES INCLUDED, HOWEVER CONNECTED, OR ANY OTHER FIXTURES UNLESS EXPRESSLY MENTIONED IN THESE PARTICULARS AS FORMING PART OF THE SALE.